



modus[®]

Changing Places,
Transforming Lives

About Changing Places Facilities

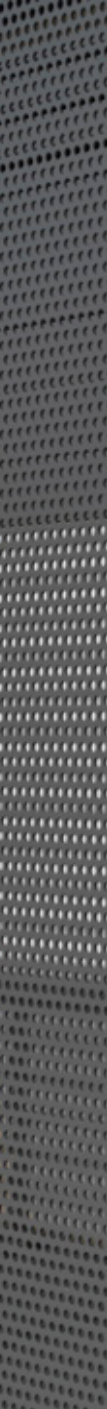
Changing Places are secure and private amenities for people with a disability who need more than is offered by a universal accessible toilet, and additional assistance to use a bathroom when out and about in the community. These places include an adult-size change table, toilet, ceiling hoist, and adequate room for two people to assist. They are a much needed addition to all public locations such as shopping centres, sporting complexes, entertainment venues, along transit routes, beaches, town centres and parks.

You can find one near you here: [www.changingplaces.org.au /find-a-toilet/](http://www.changingplaces.org.au/find-a-toilet/)

The impact of Changing Places

It is estimated that there are approximately 1.3 million Australians have a profound or severe core limitation and may require some or all the equipment in a Changing Places toilet. Lack of appropriate facilities are a major barrier preventing families and individuals to the places they can visit and how long they can spend away from their home. These facilities help improve social inclusion for those living with severe and profound disabilities, through giving them increased access to social and cultural events, and civic, political and economic opportunities.

Changing Places are a welcome advancement for carers and family members of those living with severe disabilities, enhancing the carer's physical wellbeing by removing the need to lift the person with a disability, and reducing the stress of planning excursions around bathroom needs.





Accessible Adult Change Facility

CAUTION AUTOMATIC DOOR

Occupied
Vacant
Push To Open
100-673-4

About Changing Places in Australia

Changing Places concept was first introduced in the UK in 2006, with there now being over 550 of such facilities across the country. The Australian program started in 2012 with the formation of a consortium in Victoria which is now lead by the Association for Children with a Disability (ACD) providing direction and technical support. The Changing Places Information Guide comprehensively outlines the requirements to meet accreditation for these facilities.

How you can support this program

Government, healthcare organisations and private groups have and are committing funding and practical support to the program.

You can get behind this initiative by championing for one in your community and by making a donation to the Changing Places Organisation here:

www.changingplaces.org.au/donate





The Modus Solution

Stakeholders will have the peace of mind that they are investing in an asset that is tried and proven all around Australia.

A Complex Understanding

Modus, working in close collaboration with Changing Places, the community, and other professionals, has recognised some of the main constraints in providing these facilities. Not setting aside the hard work of Changing Places Australia and the ACD, a combination of budget ambiguity, design uncertainty, and the general difficulty of coordinating numerous consultants and contractors have made Changing Places a daunting project for some.

How Modus Makes it Easy

A proud sponsor and supporter of the Changing Places initiative, Modus offers two 'off-the-shelf' pre-designed, engineered and Blue certified designs. With our extensive experience constructing toilet amenity buildings for the public realm, every detail has been considered in the construction to ensure compliance, safety, usability and longevity. Partnering with Modus to provide a Changing Places for your community means a hassle-free project from forward budgeting to cutting the ribbon.



Standard Finish – Colorbond (lower) and aluminium cladding (upper)



Premium Finish – Graphic Aluminium composite panels with vinyl graphic and anti-graffiti coating

The benefits our system offers

- No architectural service fees needed with our 'off-the-shelf' designs and customisable elements
- No consultant fees with our pre-certified designs compliant with Australian Standards and Changing Places Blue accreditation
- Clear fixed budget cost with all components supplied
- Fast supply timeframe with off-site premanufacturing
- Fast on-site construction minimising community and environmental impact
- Robust being engineered for cyclonic regions and designed for corrosion resistance in coastal locations

Changing Places

Type 1B (no shower)

Internal Fixtures

Constant Charge Ceiling Hoist H track system with full room coverage, operated by an electric hand controller

Wall Mounted Adult Sized Change Table with adjustable height operated by electric hand controller

Accessible WC with back rest

Folding Grab Rails Stainless Steel, on left and right of toilet

Fixed Grab Rails Stainless Steel

Wall Mounted Wash Basin with mixer tap and integrated shelf

Hand Dryer motion automated 2200 Watts blower

Automatic Door operated MLAK key or optional swipe card activation — entrance clearance 1000mm

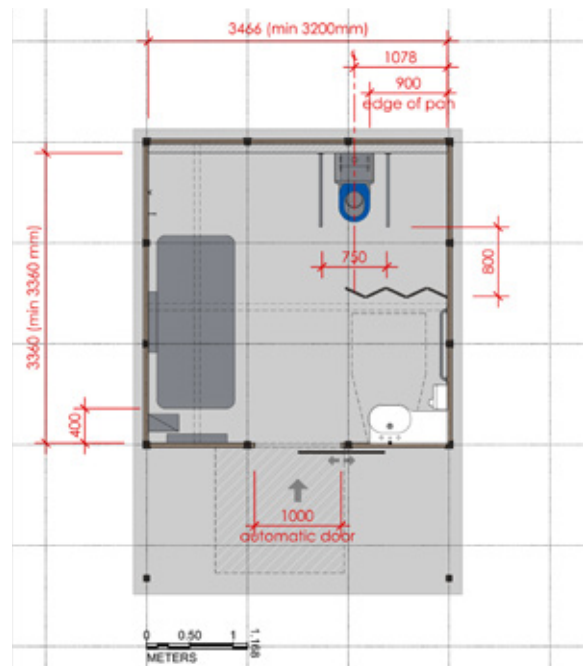
High Efficiency LED Lights

Lockable Distribution Box

Wall Mounted Privacy Screen in front of toilet

Sanitary Wipe Dispenser near change table

Soap Dispenser



Changing Places Type 2 (with shower)

Internal Fixtures (Option B)

Constant Charge Ceiling Hoist H track system with full room coverage, operated by an electric hand controller

Wall Mounted Adult Sized Change Table with adjustable height operated by electric hand controller

Accessible WC with back rest

Folding Grab Rails Stainless Steel, on left and right of toilet

Fixed Grab Rails Stainless Steel

Wall Mounted Wash Basin with mixer tap and integrated shelf

Hand Dryer motion automated 2200 Watts blower

Automatic Door operated MLAK key or optional swipe card activation — entrance clearance 1000mm

High Efficiency LED Lights

Lockable Distribution Box

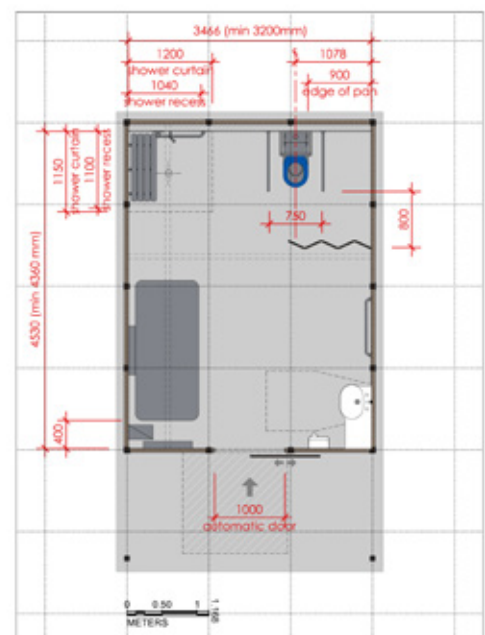
Wall Mounted Privacy Screen in front of toilet

Sanitary Wipe Dispenser near change table

Soap Dispenser

Shower with fold down platform bench

Instantaneous Gas Hot Water System Rinnai Infinity 26





PROJECT

Glenthorne National Park, SA

Location

O'Halloran Hill SA

Client

Department for
Environment and
Water

Completed

December 2024

Product

Custom Changing
Places 1B

Located at Glenthorne National Park-Ityamaitpinna Yarta, Modus delivered a fully compliant Changing Places toilet facilities designed to blend harmoniously with its natural surroundings. The Changing Places is a part of an ongoing effort to create spaces that enable individuals with high support needs to fully participate in community life.

Working in collaboration with the Department of Environment and Water Modus designed a external cladding of natural timber in

seasoned silver ash that reflects the surrounding park environment, creating a welcoming and inclusive space for all visitors.

To address the challenges of utility connections our team developed innovative solutions, ensuring uninterrupted sewage and electricity access while maintaining full compliance. A direct pathway from the carpark to the facility was designed to provide safe and easy wheelchair access.





■ RELATED PROJECT

Ballina Shire, NSW

Location

Ballina, NSW

Client

Ballina Shire Council

Completed

2023

Product

Blue Level Changing Places Facility

Ballina Shire Council delivered one of the first Changing Places accredited facilities in New South Wales, setting a new benchmark in public toilet accessibility. Designed in close consultation with Modus Australia, the facility provides safe, dignified amenities for people with high support needs - a group of over 200,000 Australians who often face barriers in accessing public space.

The purpose-built public restroom includes a fully compliant Blue Level Changing Places fitout and was manufactured and supplied as a modular panel system for fast, efficient on-site assembly.

The exterior features a custom green verandah façade, Wood-Plastic Composite (WPC) slats, and a perforated privacy screen, blending modern design with local coastal character. Custom door decals further enhance the identity and visibility of the facility.

This project won the NSW Engineering Excellence Award from the Institute of Public Works Engineering Australasia, in the category of Design and Construction of a Local Government Works Project. The recognition highlights the project's leadership in accessibility and demonstrates how Changing Places facilities can be adapted for public restrooms across Australia.





■ RELATED PROJECT

Hadfield Park Wallan, VIC

Location

Wallan, VIC

Client

Mitchell Shire

Completed

September 2022

Product

Changing Places 2

Located within one of Victoria's most inclusive recreational parks, the Hadfield Park Changing Places facility is part of a broader vision for accessible outdoor spaces. The park itself features accessible pathways, interactive play equipment including a flying fox with a supportive seat, a splash park, BBQ areas.

This facility provides a safe, private and dignified space for people with disability and high support needs, going well beyond standard accessible toilets. It includes all required equipment to meet Changing Places standards and enables greater independence and community participation.

Modus Australia delivered a complete prefabricated solution, including all services and concrete documentation. The structure was built using our modular panel system and clad in premium Blackbutt timber battens, selected to complement the surrounding natural environment and park infrastructure.

The building has received consistent praise for its clean, modern look and how well it blends into the park's open space. Its timber slat façade adds texture and warmth, while its placement enhances accessibility without interrupting the flow of the space.





modus[®]

modusaustralia.com.au